

Arden House Medical Practice Newsletter

January 2025

We have lots of exciting changes happening this month.



We welcome back **Dr Ravi Bhattacharjee**, we also welcome new Practice Nurse, **Claire** who will be seeing patients for long term conditions, child immunisations and general treatment room needs.

We have a new operations manager **Kate**, who will assist with the day to day running of the practice.

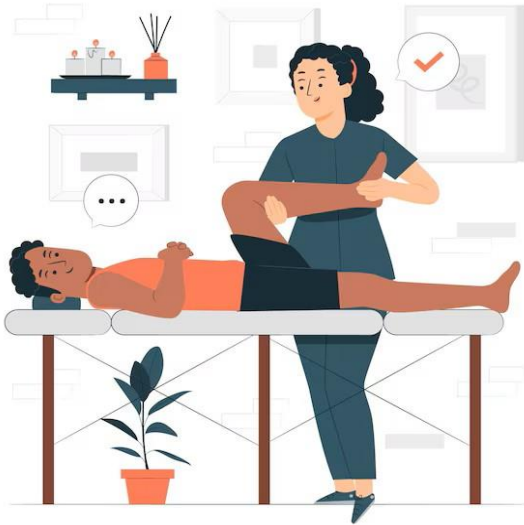
In February an **Advanced Nurse Practitioner** will be joining the team, to look after our housebound and care home patients, and will also be holding patient clinics.

We said Goodbye to Caroline the Practice Nurse and Dr Paul McIntyre and we wish them both well in their new jobs.



We will have our **new website** launching on 29th January 2025, it will be simplified and easier to navigate for patients and more phone/tablet friendly. (Old and New website may be out of use for a few hours)

Arden House Medical Practice Newsletter



Advanced Musculoskeletal Practitioner

If patients ring regarding muscle/joint aches and pains, you may be directed to book an appointment with one of the musculoskeletal team, they may refer patients back to a GP if appropriate.

NHS App

We are encouraging all patients to download the NHS app, it is very easy to order medications or view test results without the need to contact the practice.

We hope to hold an open morning or afternoon, aimed at helping patients to download and use the **NHS app**, dates and times tbc. Here is the link to the website to help get you started.

<https://www.nhs.uk/nhs-app/nhs-app-help-and-support/getting-started-with-the-nhs-app/>



Arden House Medical Practice Newsletter



Patient Participation Group (PPG)

We would love to hear from patients who can add positive energy to our patient participation group and help the practice to improve the patient experience. Contact the practice via the website.

<https://www.ardenhousemedicalpractice.co.uk/navigator/ask-the-reception-a-question/>

COMING SOON



From April, we will be moving to month of birth for all long-term condition reviews, you may be invited for your review sooner than you expect.